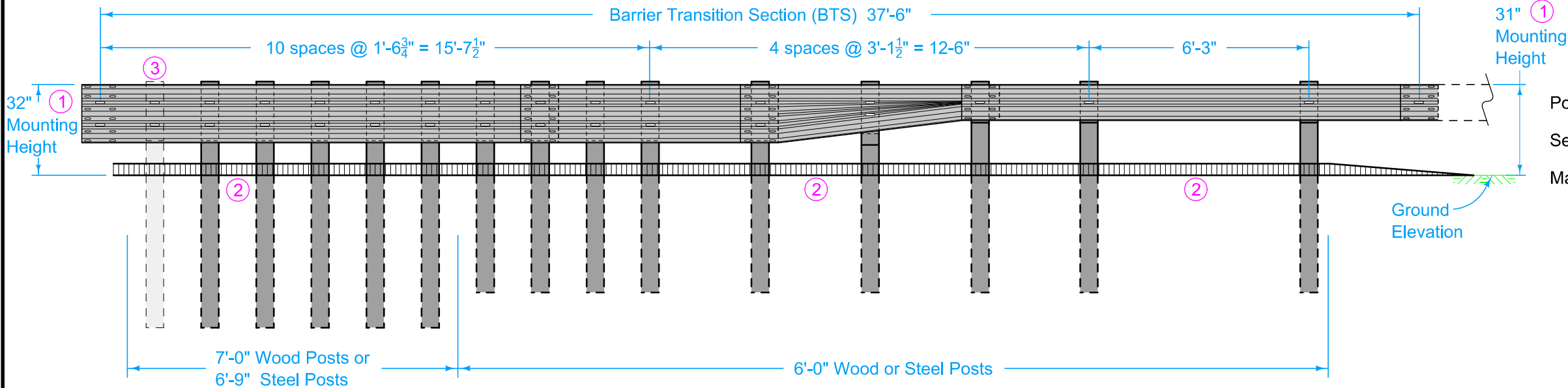
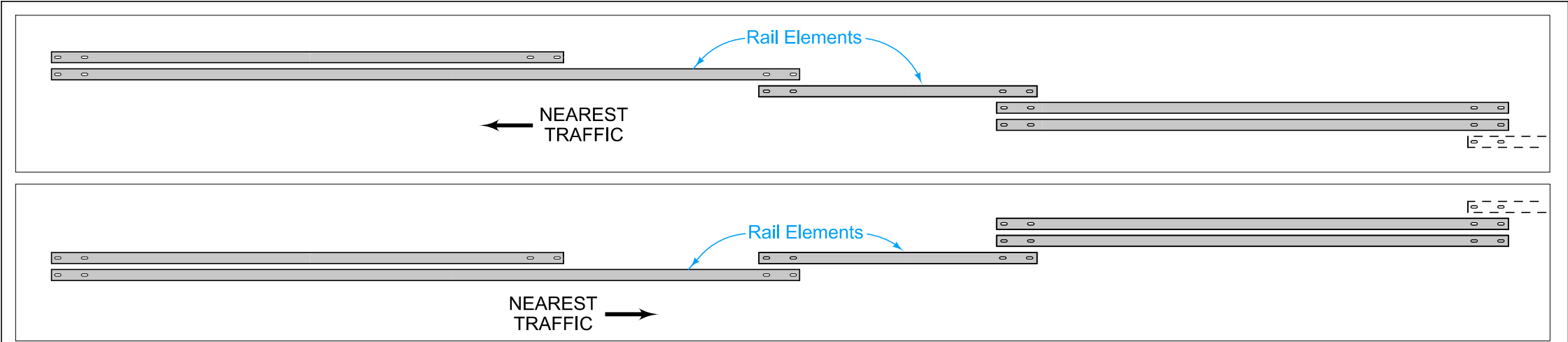


PLAN



ELEVATION



LAPPING PROCEDURES

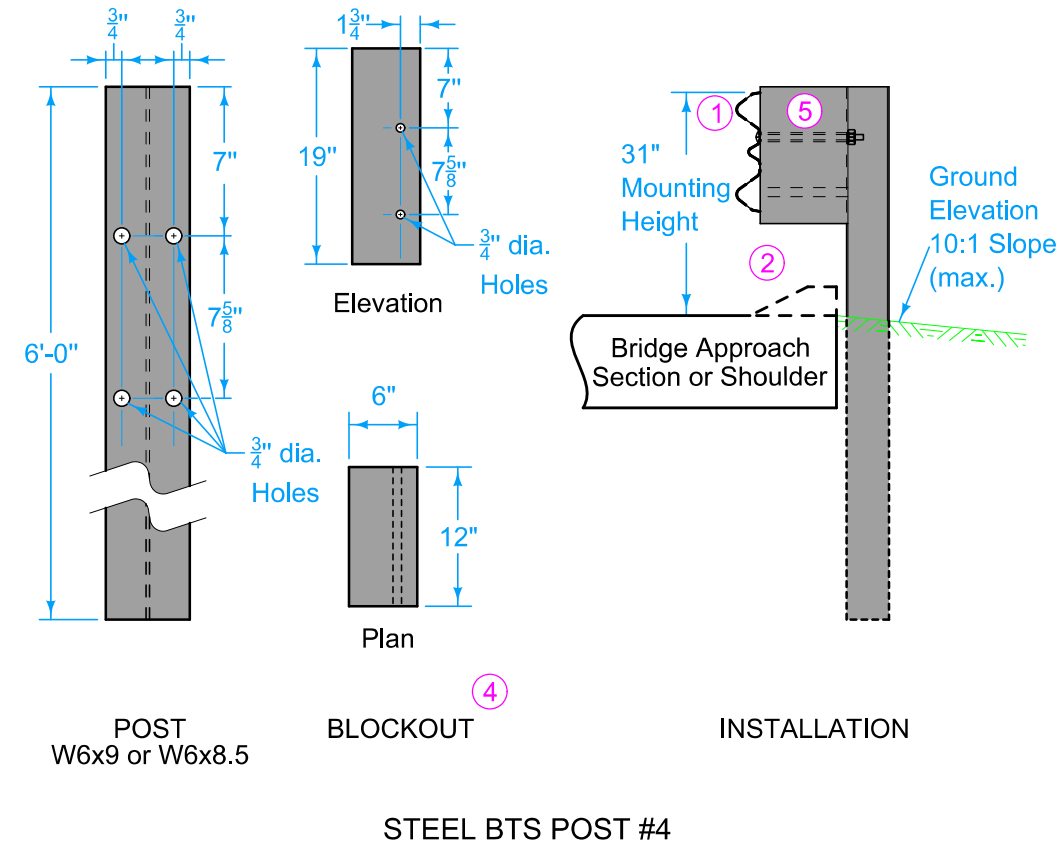
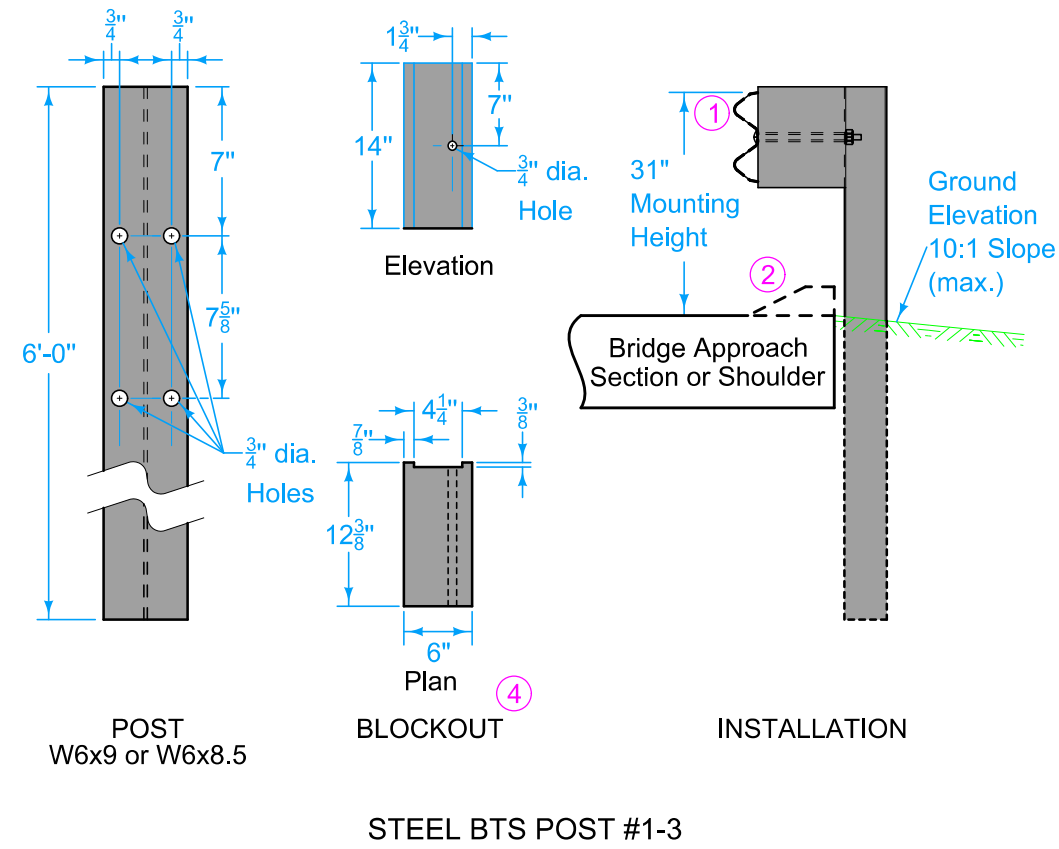
- At Bridge End Drains, cut Scour Protection (Transition Mat and Turf Reinforcement Mat) or remove rock as required to place post(s) such that Bridge End Drains abut post(s).
- ① Guardrail mounting height at barrier connection is 32 inches. Transition guardrail mounting height down to 31 inches at BTS Post #3.
 - ② Possible 4 inch sloped curb. See project plans. Refer to PV-102 for curb and runout details.
 - ③ Depending on end anchor type, BTS Post #15 may be eliminated or modified. See BA-202

Possible Contract Item:
Steel Beam Guardrail Barrier Transition Section, BA-201

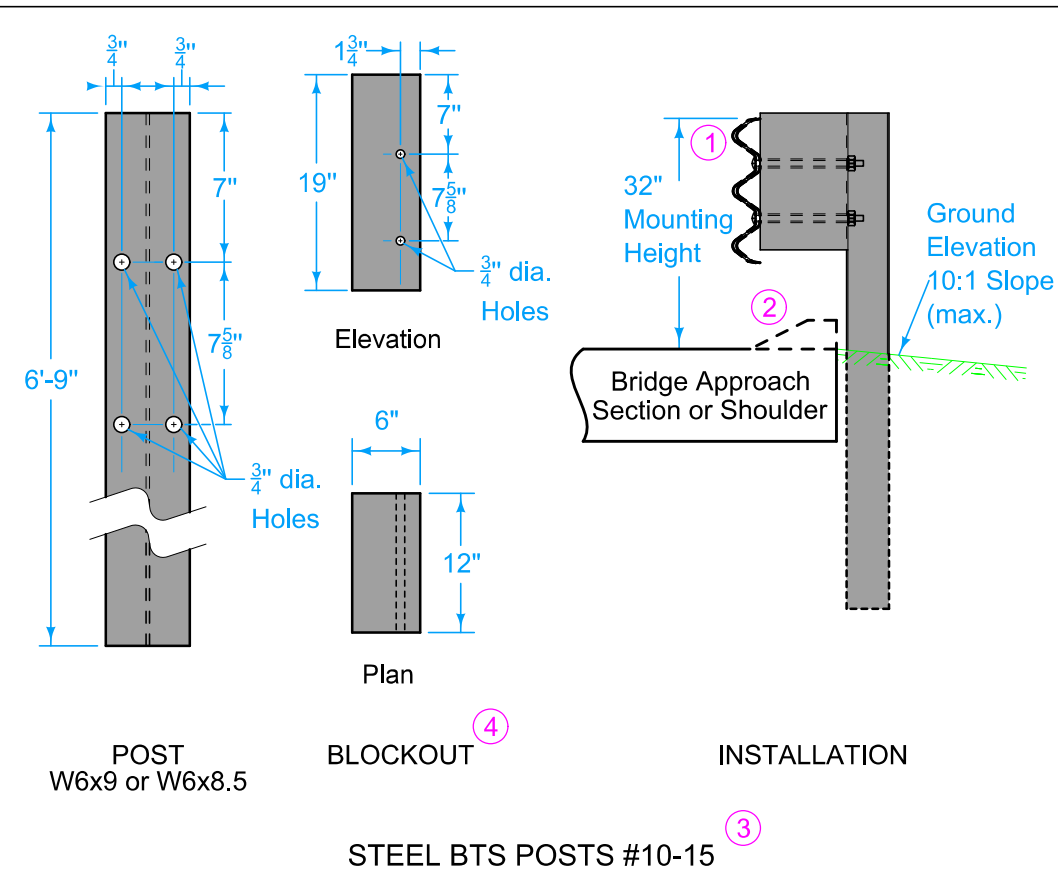
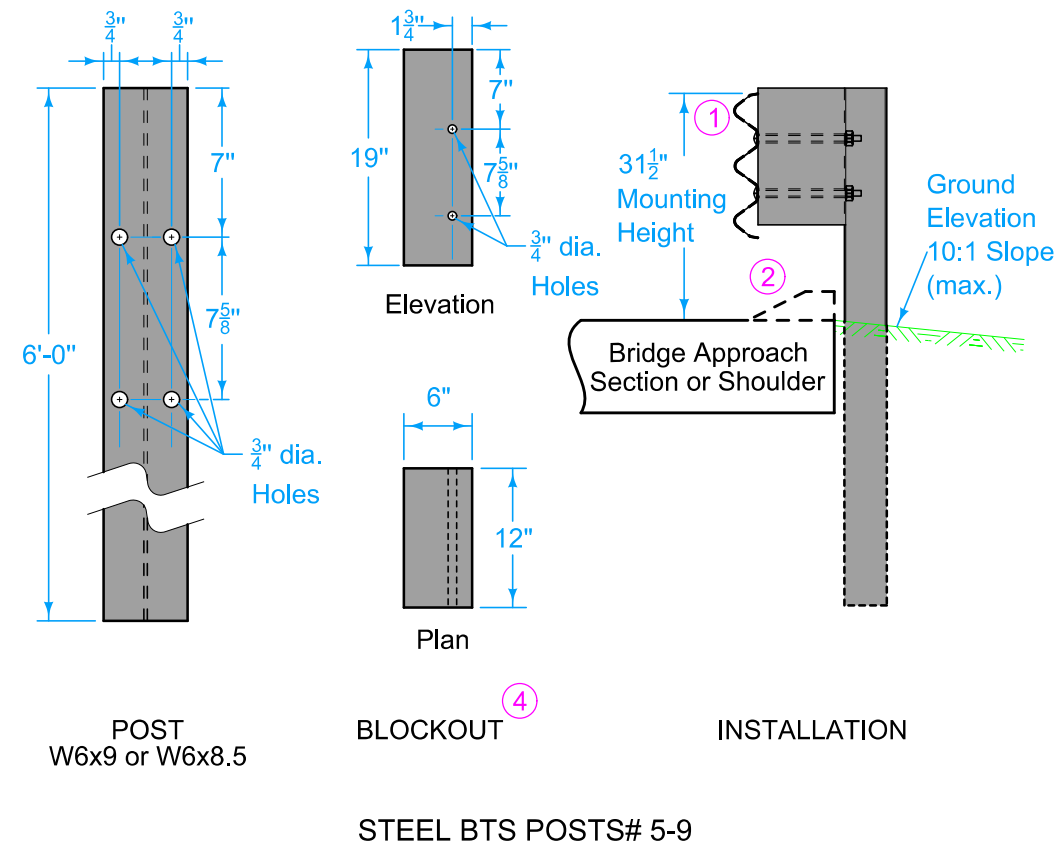
- Materials included in the Contract Item:
- Steel Post Option:
- (9) W6x9 x 6'-0" posts
 - (6) 6" x 8" x 6'-9" posts
 - (12) 6" x 12" x 19" blockouts
 - (3) 6" x 12" x 14" blockouts
- Wood Post Option:
- (9) 6" x 8" x 6'-0" posts
 - (6) 6" x 8" x 7'-0" posts
 - (12) 6" x 12" x 19" blockouts
 - (3) 6" x 12" x 14" blockouts
- (1) Asymmetrical Transition Section
(2) 12'-6" Thrie-Beam rail sections*
(1) 6'-3" Thrie-Beam rail section*
(2) 12'-6" W-Beam rail sections
Approved bolts, nuts, and washers
Refer to BA-200 for guardrail components



* One 18'-9" Thrie-Beam rail section may be substituted for one of the 12'-6" sections and the 6'-3" section as shown

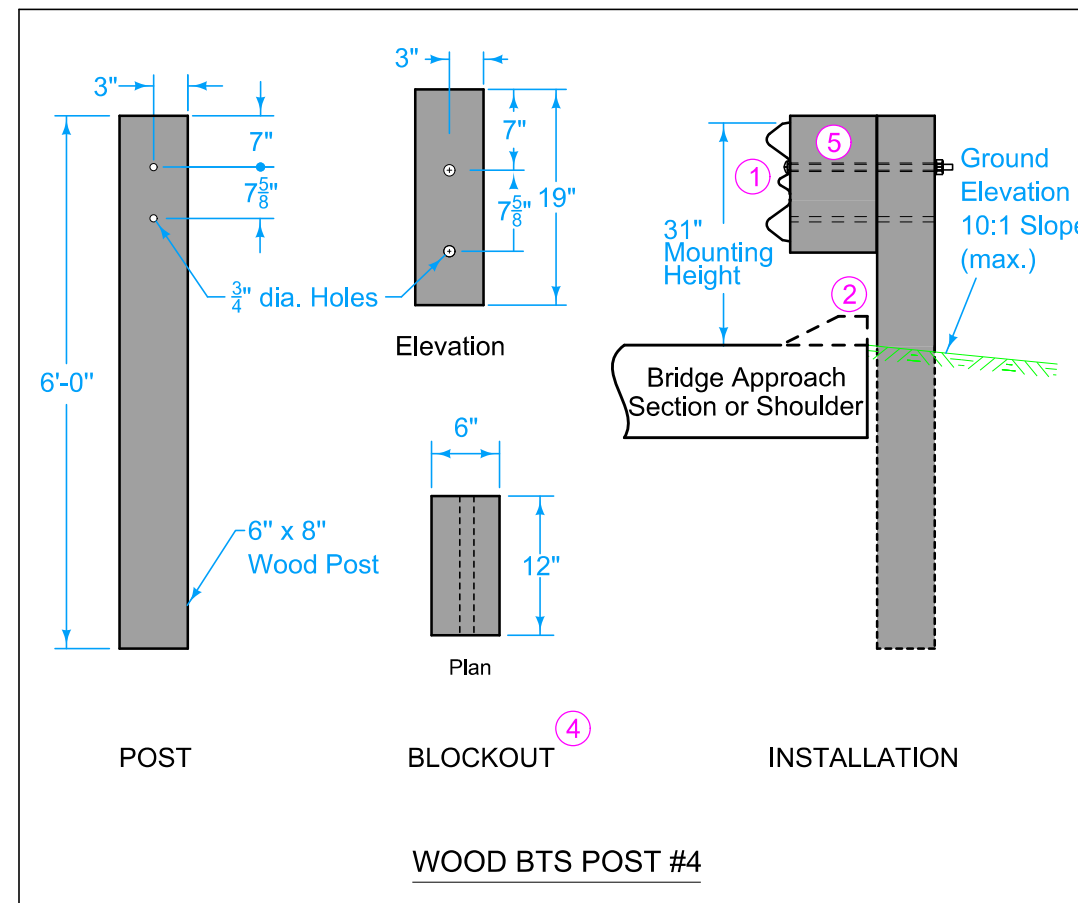
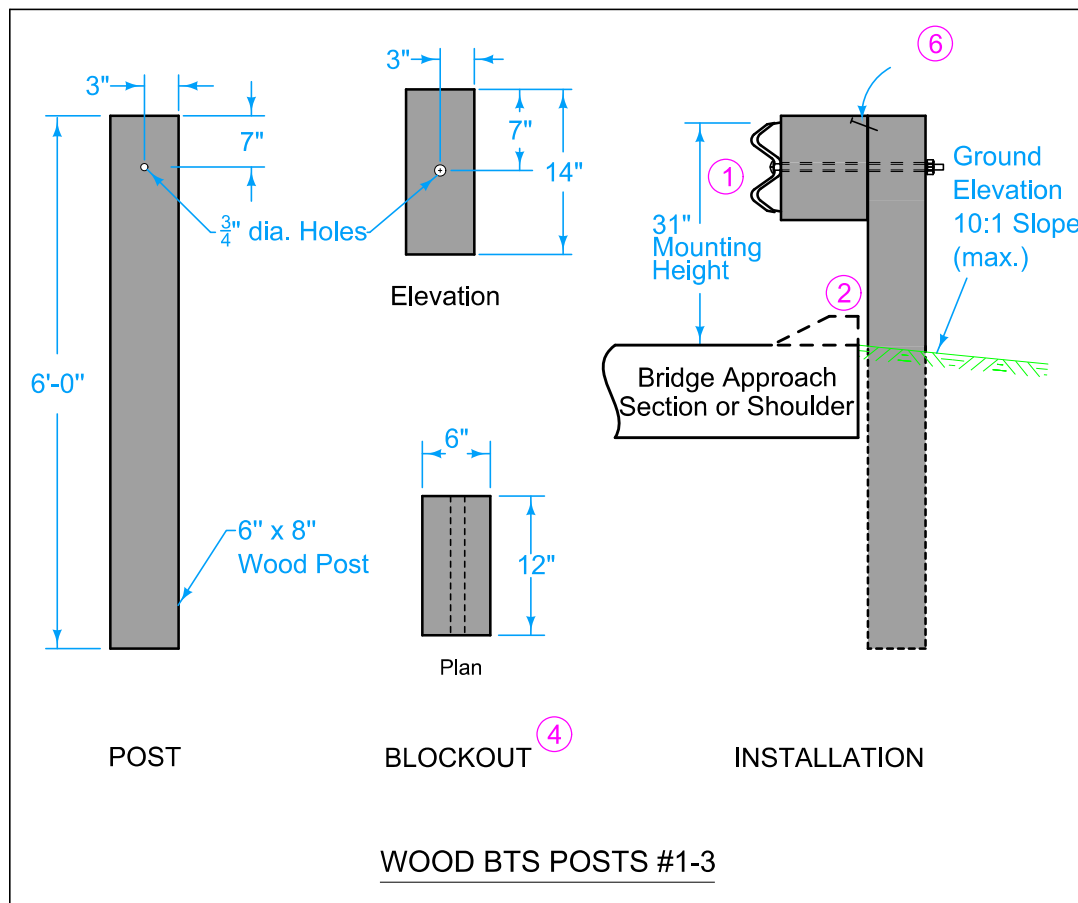
IOWA DOT	REVISION	
	7	10-18-22
STANDARD ROAD PLAN	BA-201	
REVISIONS: Revised curb note.	SHEET 1 of 3	
APPROVED BY DESIGN METHODS ENGINEER		
STEEL BEAM GUARDRAIL BARRIER TRANSITION SECTION (MASH TL-3)		



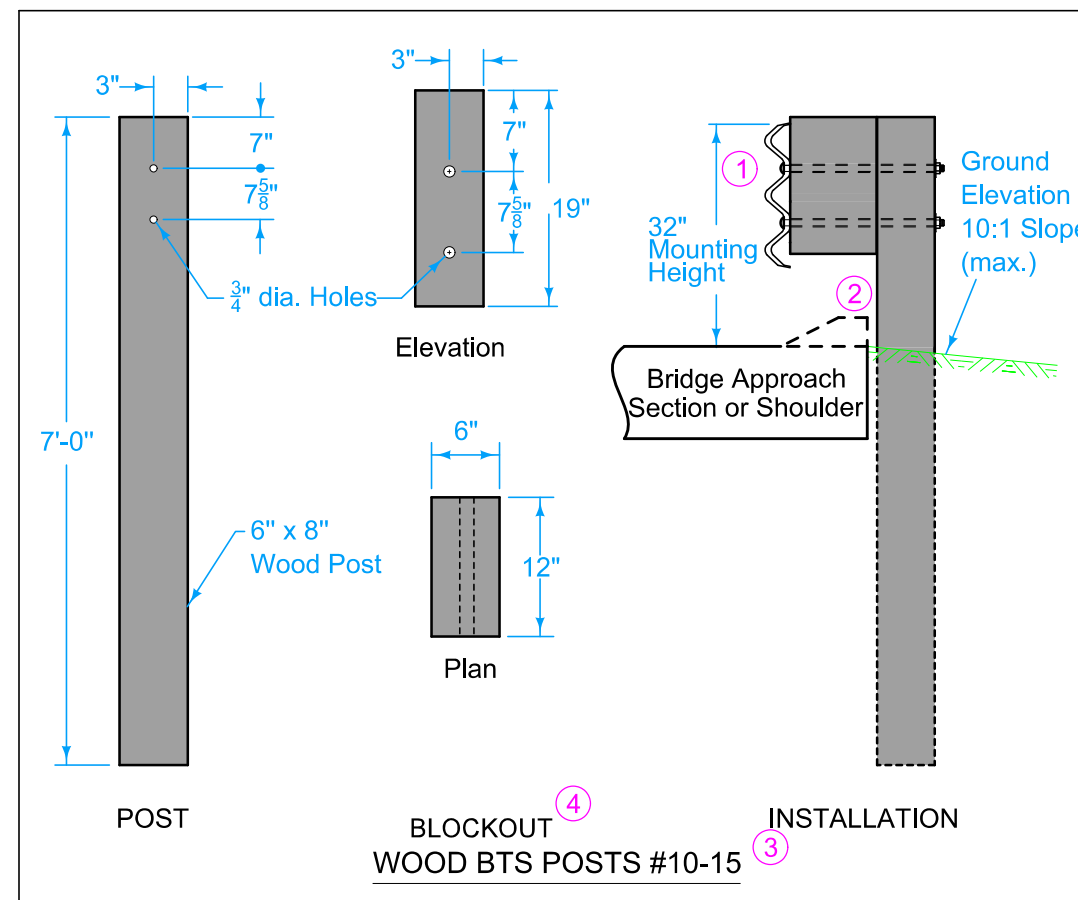
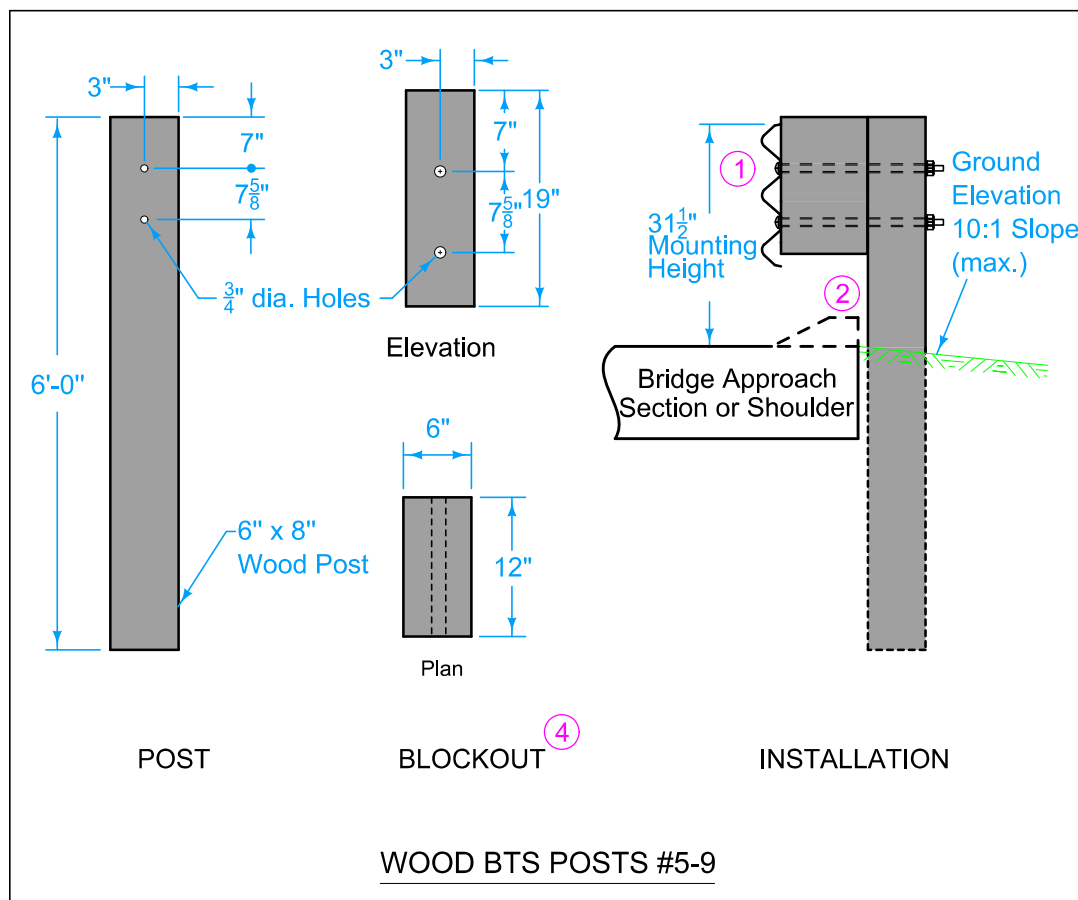
- ① Guardrail mounting height at barrier connection is 32 inches. Transition guardrail mounting height down to 31 inches at BTS Post #3.
- ② Possible 4 inch sloped curb. See project plans. Refer to PV-102 for curb and runout details.
- ③ Depending on end anchor type, BTS Post #15 may be eliminated or modified. See BA-202
- ④ Wood or composite only. Steel blockouts will not be allowed.
- ⑤ Place bolt in top hole only.





 IOWA DOT	REVISION	
	7	10-18-22
	BA-201	
	SHEET 2 of 3	
STANDARD ROAD PLAN		
REVISIONS: Revised curb note.		
		
APPROVED BY DESIGN METHODS ENGINEER		
STEEL BEAM GUARDRAIL BARRIER TRANSITION SECTION (MASH TL-3)		



- ① Guardrail mounting height at barrier connection is 32 inches. Transition guardrail mounting height down to 31 inches at BTS Post #3.
- ② Possible 4 inch sloped curb. See project plans. Refer to PV-102 for curb and runout details.
- ③ Depending on end anchor type, BTS Post #15 may be eliminated or modified. See BA-202.
- ④ Wood or composite only. Steel blockouts will not be allowed.
- ⑤ Place bolt in top hole only.
- ⑥ 16d nail to prevent blockout rotation.



 STANDARD ROAD PLAN	REVISION	
	7	10-18-22
	BA-201	
	SHEET 3 of 3	
	REVISIONS: Revised curb note.	
		
APPROVED BY DESIGN METHODS ENGINEER		
STEEL BEAM GUARDRAIL BARRIER TRANSITION SECTION (MASH TL-3)		